

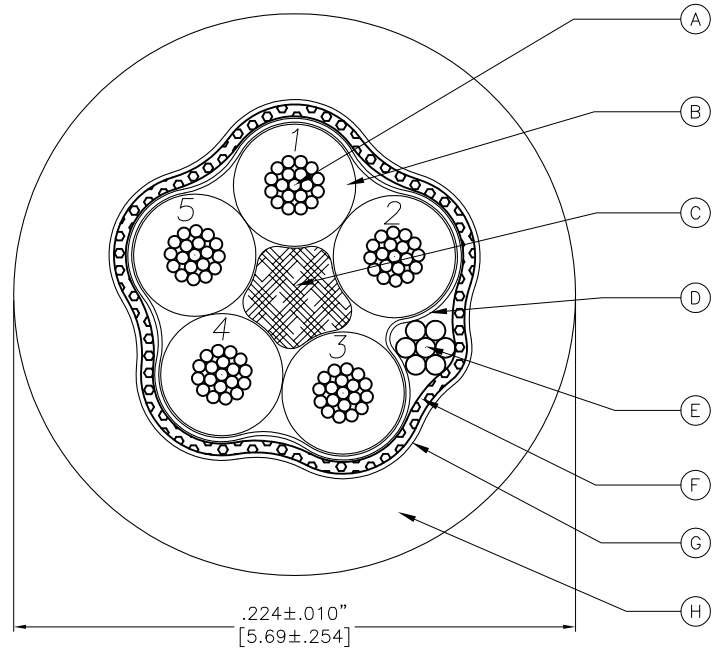
5x22 AWG AWM 21743 90C 300V

SPECIFICATIONS

A	22 AWG 19x.0058" UNILAY TINNED COPPER
B	PVC INSULATION
C	FILLER
D	ALUMINUM/POLYESTER FOIL SHIELD (FOIL OUT)
E	24 AWG TINNED COPPER DRAIN WIRE
F	38 AWG TINNED COPPER BRAIDED SHIELD (65% COVERAGE)
G	PAPER SEPARATOR
H	TPU JACKET JACKET COLOR: BLACK CABLE IS RoHS COMPLIANT, CE

CONDUCTOR COLORS

- 1 = BROWN
- 2 = WHITE
- 3 = BLUE
- 4 = BLACK
- 5 = GRAY



MECHANICAL REQUIREMENTS

STATIC: 5x CABLE O.D.

FLEX SHIELDED: 15x CABLE O.D.

NOTES:


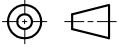
1. WHITE INK

101551507 22 AWG/5 RU AWM 90C 300V UL# CSA AWM CSA#
1/II A/B 90C 300V FT1 CE SUPPLIER LOT CODE
(WHEN APPLICABLE) MFG DATE CODE (EXAMPLE 00108 (DAY & YEAR))

2. c(UL) IS ACCEPTABLE IN PLACE OF ANY/ALL CSA MARKINGS.

NOTE: CONDUCTOR ROTATION MAY BE INVERTED FROM VIEW SHOWN

SOURCE DRAWING - FOR REFERENCE ONLY

RELATED DOCUMENTS		3RD ANGLE PROJECTION		THIS DRAWING IS CONFIDENTIAL AND THE PROPERTY OF TURCK INC. USE OF THIS DOCUMENT WITHOUT WRITTEN PERMISSION IS PROHIBITED.		 <p>3000 CAMPUS DRIVE MINNEAPOLIS, MN 55441 1-800-544-7769 (763) 553-7300 (763) 553-0708 fax www.turck.us</p>	
1. 2. 3. 4.				DRFT CK DATE 08/03/11		DESCRIPTION CAB,5.69,BLK,TPU,5X22,S-,AWM	
MATERIAL SEE SPECIFICATIONS		ALL DIMENSIONS DISPLAYED ON THIS DRAWING ARE FOR REFERENCE ONLY		APVD SF SCALE NONE		IDENTIFICATION NO. 101551507 (SOURCE)	
FINISH SEE SPECIFICATIONS		CONTACT TURCK FOR MORE INFORMATION		UNIT OF MEASUREMENT INCH [MILLIMETER]		REV C	
C ADD "CE" MARK TO LEGEND AND COMPLIANCE		RDS 07/20/17 61379		DO NOT SCALE THIS DRAWING		FILE: 101551507	
REV DESCRIPTION		BY DATE ECO NO.				SHEET 1 OF 1	